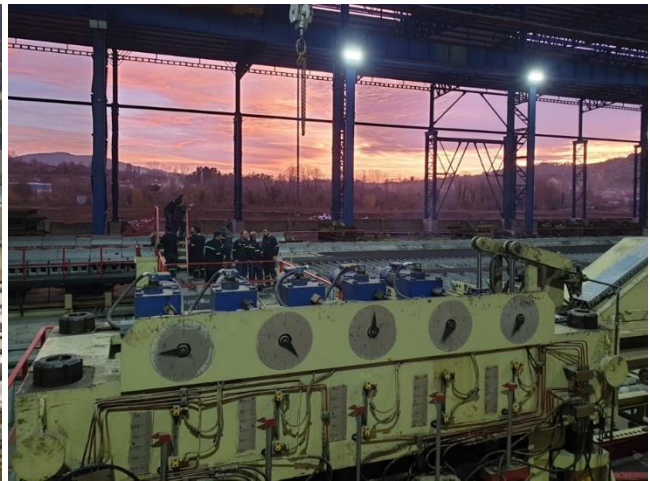
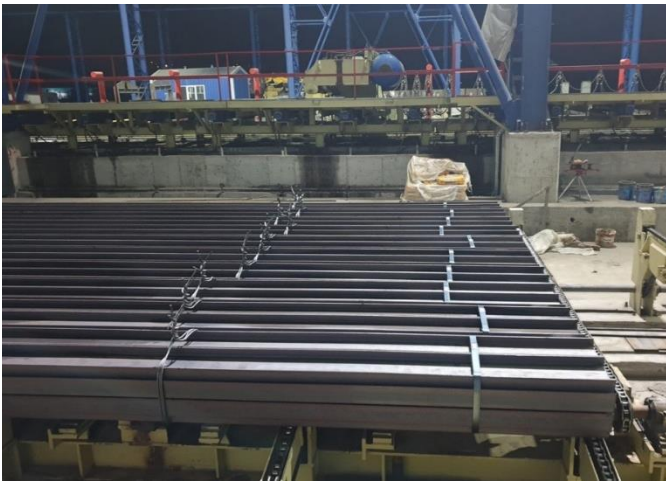


## Rolling I-Beam IPE200 project at Mescier progressing well

Turkish client Mescier congratulates with AIC for its great contribution after commissioning the “Medium Section Profile Rolling Mill” project on November 15th, 2023, in the year of the 100th anniversary of the Turkish Republic. This project marks the beginning of Mescier's larger investment plan in Bartın's Organized Industrial Zone, near the Black Sea, in Northern Turkey.

AIC scope of supply in the project included Blooming, rolling mill, two shears, cooling bed and straightening machine, two saws, stacker, binding machine and evacuation area, with new DC drive cabinets equipped with Nidec ASI converters and new distribution cabinets.

Furthermore, the HMI system has been upgraded with new servers, PC clients, monitor and supervision licenses.



The project also has a deeper meaning for Mescier: the investment has been shaped with the objective of revealing the country's potential and to have an impact by producing and creating values, as confirmed by plant director Mr. Tuna Gunesen.

**About Companies:**

**AIC Group** is a technological partner with extensive experience and deep know-how and stands itself as a global power control supplier and system integrator designing, manufacturing, and implementing automation systems, process control, and mechatronic solutions for both greenfield and revamping projects. Focusing on the steel and metals industries for long and flat products, the Group provides cutting-edge technical solutions by handling complex project schedules and thus establishing satisfactory and remarkable partnerships through its 6 international offices.

More than 45 years of modernization for endless reliability processes.

**Mescier Steel Industry & Trade Co. Ltd.**, based on trading iron and steel products dating back to 1960's in Karabuk, has become a manufacturing company with the Rolling Mill launched in 1990. Mescier Steel Industry's core business includes products such as equal angles, flat, square and round bars, U channels, J & H beams etc. The facility, whose annual production is 200.000 m/tons, produces mostly equal angles. The factory in Bartin makes production on a 60.000 m<sup>2</sup> closed part of 200.000 m<sup>2</sup> area in total. The factory, whose annual production is 650.000 m/tons.

**For more information:**

Francesco Onnis  
Sales and Marketing Assistant  
Email: [francesco.onnis@aicnet.it](mailto:francesco.onnis@aicnet.it)  
Tel: +39 0365 826333

