

Automation Upgrade for Acciaierie Venete, Odolo (BS, Italy).

Acciaierie Venete Group has renewed its confidence in AIC to modernize the automation system on the cooling bed outlet, including the cold shear area, stacking bars, bars exit, and binding.

Activities have taken place during the summer halt, involving the replacement and refurbishment of the obsolete Siemens S5 PLC with a new Rockwell L82 Safety PLC.

The plant was able to resume in just one week at full capacity, and its performance has since improved because of the continual control work that has increased operational flexibility and sped up the operating line.

AIC also provided installation supervision and commissioning, as well as start-up support and remote assistance.

The work is a continuation of a previous intervention on the same site in 2019, which involved works from the furnace exit to the cooling bed and the auxiliary parts.

The two companies' collaboration is strengthened by renovation projects completed over the last 15 years, including at the plants in Dolcè (VR), Mura (BS), and Sarezzo (BS).

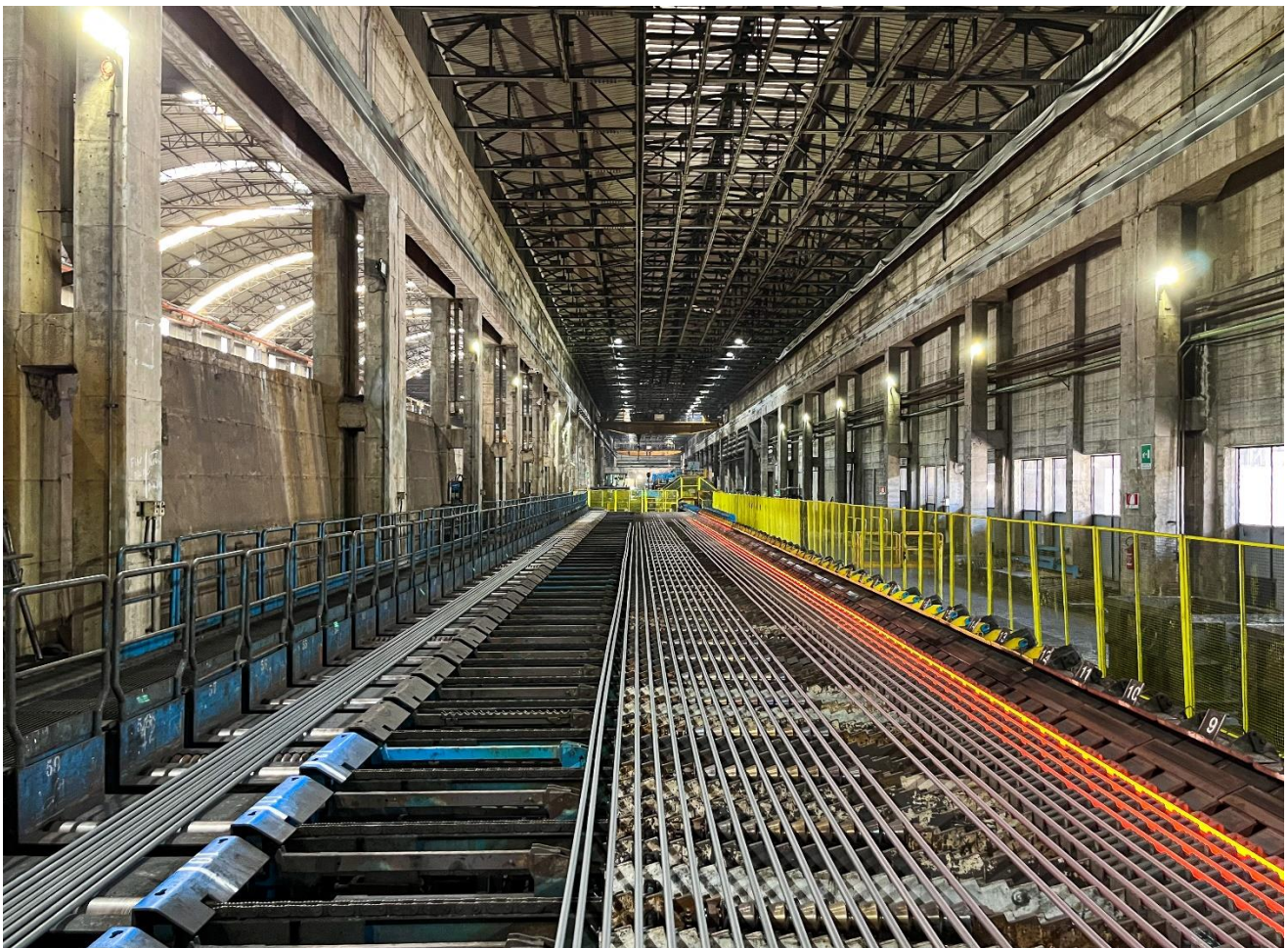


Figure 1 – Cooling bed outlet area.

AIC Capitanio Tailored Automation is a global system integrator that designs, manufactures and commissions turn-key plants worldwide, providing advanced and tailored automation and mechatronics solutions for the steel industry, with the aim to continuously improve both efficiencies, competitiveness and safety of the production processes. With more than 1500 applications worldwide and more than 45 years of history, AIC can boast a unique experience in both greenfield and revamping projects, especially in meltshops and long products rolling mills.

Acciaierie Venete first began producing steel in 1957 operating in the field of commodities: ingots, billets and rebars. At the beginning of the 1980s, the company began to move towards the production of high-quality long products, a process which led to it becoming one of Europe's leading producers in the engineering steel market. The company has not only grown and developed internally (by investing in human resources, technology, processes and products) but also externally (with the acquisition in 2003 of the Sarezzo, Mura and Dolcè plants and in 2018 of the Borgo Valsugana and Odolo plants).

For more information:



Mattia Campanini
Global Marketing Coordinator
Email: mattia.campanini@aicnet.it
Tel: +39 0365 826333