

## Drives and Automation Modernization for Gerdau Group in Brazil

AiC Brazil has recently revamped both Cosigua and Divinópolis steel plants for Gerdau Group. These latest projects demonstrate the two companies' strong bond, a truly long-lasting relationship, with multiple projects completed in many of its plants in North and Latin America.

The project for **Cosigua** intervened on Two stands in Mill 2, replacing DC with AC power supplies and fitting the existing plant with modern motors and ABB's ACS880 Multi drives.

That could be considered the first reference inside Gerdau Group with the 4000A AC Low voltage, scaling down energy consumption and enhancing performance.

The supply scope expanded the availability of spare parts while also providing engineering and training.

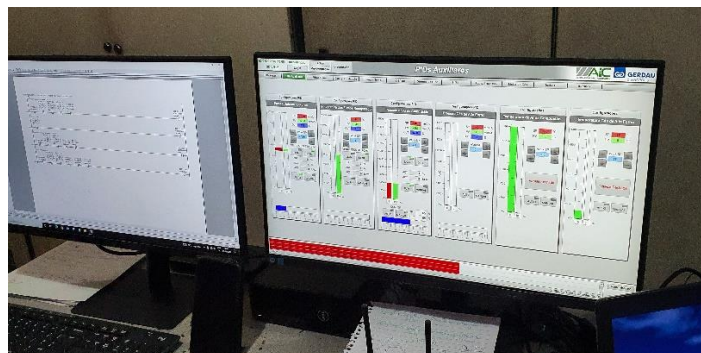


**Figure 1 & 2 – Main parts involved in Cosigua intervention.**

Inversely, the job on **Divinópolis** has consisted of the automation modernization on the 80 tph pusher-type reheating furnace, raising energy efficiency.

Brand-new ABB PLCs (AC800M-PM866), for combustion and movements, were included in the project's package, fitting with Siemens Simatic WinCC and HMI TP1200 Comfort Panel technology, plus Engineering and Client Stations.

The reduction of heat losses and the increase in productivity that arises from cutting down furnace shutdown time, has been addressed by the software upgrade, which includes new Temperature Control on three-zone, new movement controls (Entry Side, Inside Furnace, Exit Side), and new screens.



**Figure 3 – Control of the reheat furnace's settings.**

AIC Capitanio Tailored Automation is a global system integrator that designs, manufactures and commissions turn-key plants worldwide, providing advanced and tailored automation and mechatronics solutions for the steel industry, with the aim to continuously improve both efficiencies, competitiveness and safety of the production processes. With more than 1500 applications worldwide and more than 45 years of history, AIC can boast a unique experience in both greenfield and revamping projects, especially in meltshops and long products rolling mills.

**Since 2016**, AIC has had its headquarters in Brazil, a strategic decision that allows it to contribute to and support all of South America. The choice of Sao Paulo, Latin America's largest city, allows for immediate connections throughout the world as well as quick and efficient assistance.

Gerdau is Brazil's largest steel producer, one of the leading producers of long steel in the Americas and of special steel in the world. In Brazil, it also produces flat steel and iron ore for its own consumption. In January last year, it completes 120 years of a history marked by strength, contribution to development and legacy for a society in constant evolution. Guided by its proposition to empower people who build the future, the company is present in 10 countries and has over 30,000 direct and indirect employees in its operations. Gerdau is the largest recycling company in Latin America and uses scrap as an important input: 73% of the steel it produces comes from scrap. Brazil headquarters is a wholly owned subsidiary of Gerdau S.A.

**For more information:**



Mattia Campanini  
Global Marketing Coordinator  
Email: [mattia.campanini@aicnet.it](mailto:mattia.campanini@aicnet.it)  
Tel: +39 0365 826333