

Digital Transformation is a precondition to Industry 4.0 and **AiC's** Domain Expertise is an added value

PLANNING INTERFACE

Raw Material Planning
Monthly/ Daily Plan
Raw Material Composition,
Heat /Element Balance



RAW MATERIAL SCRAP



REJECTED CASTING +
RETURNS

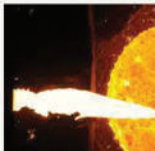
Digital Transformation is a precondition to Industry 4.0 and **AiC's** Domain Expertise is an added value



RM

TECHNICAL DELIVERY CONDITIONS

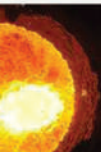
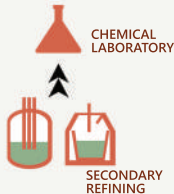
Master Data
Process Route
Inspection Testing and
Sampling Setup



MELTING

Digital Transformation is a precondition to Industry 4.0 and **AiC's** Domain Expertise is an added value

SCHEDULING & MODELLING



(IF/EAF)

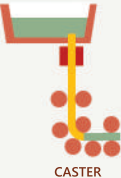
Charge Mix
Unit Wise Scheduling
Process steps-operator
guidance
Process models



FERRO ALLOY ADDITIONS

Digital Transformation is a precondition to Industry 4.0 and **AiC's** Domain Expertise is an added value

EQUIPMENT MANAGEMENT



CASTER

- Ladle Management
- Lining Management
- Mould Roll Management
- Ladle Tracking/ Yard Management
- Inventory/ Store Management



FINISHED

Digital Transformation is a precondition to Industry 4.0 and AIC's Domain Expertise is an added value

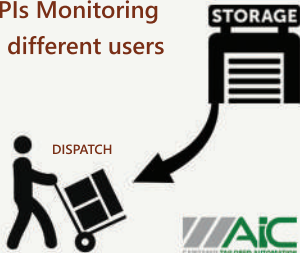


REPORTING



PRODUCTS

Heat Wise Reporting
Consumption Reporting
Real-time KPIs Monitoring
Dashboards different users



Digital Transformation is a precondition to Industry 4.0 and **AIC's** Domain Expertise is an added value

INTERFACE TO EXTERNAL SYSTEMS

ERP Systems

Laboratory equipment

Marking

Tagging & Tying equipment



Value Addition in every step of the production chain

MINIMIZE
LOSSES



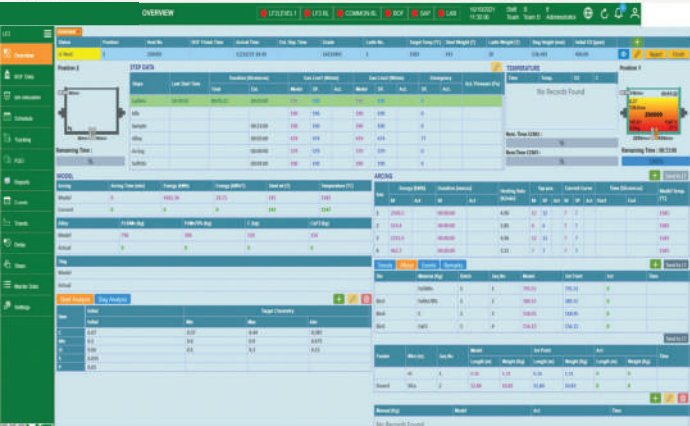
MAXIMISE
YIELD



MAXIMISE
PRODUCTIVITY



IMPROVED
PROFITABILITY



Interested?

Be in touch with our Digital transformation experts

kkannan@aicnet.in

ragnunath@aicnet.in

Value Addition in every step of the production chain

MINIMIZE
LOSSES



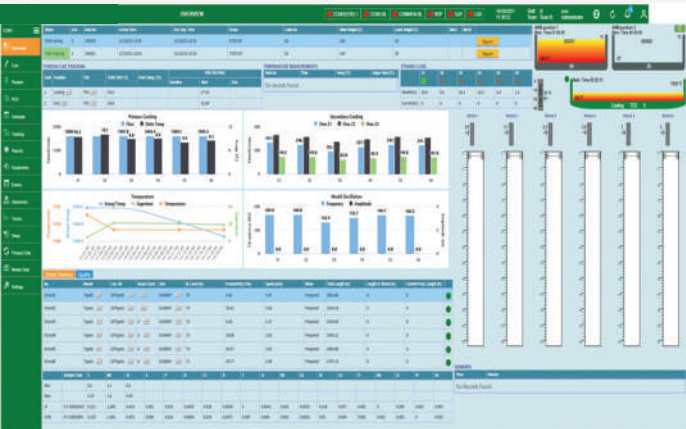
MAXIMISE
YIELD



MAXIMISE
PRODUCTIVITY



IMPROVED
PROFITABILITY



Interested?

Be in touch with our Digital transformation experts

kkannan@aicnet.in

ragnunath@aicnet.in

Value Addition in every step of the production chain

MINIMIZE
LOSSES



MAXIMISE
YIELD



MAXIMISE
PRODUCTIVITY



IMPROVED
PROFITABILITY

LP Level 2 Heat Report For Heat No. 1															
Steel Grade:						Track Level No. 1									
Order:						Finished:									
Batch Data:			StockLot:			Consumptions:			Specific Values:						
Batch No.:	0	000000	StockLot Name:	000000	000000	W1 Steel:	0.1480	W2 Steel:	0.1480	Spec. Gas Steel:	0.1480				
Batch Name:	000000	000000	StockLot Code:	000000	000000	W3 Steel:	0.1480	W4 Steel:	0.1480	Spec. Gas Steel:	0.1480				
Batch Date:	0.000	000000	StockLot Date:	0.000	000000	W5 Steel:	0.1480	W6 Steel:	0.1480	Spec. Gas Steel:	0.1480				
Batch Time:	0.000	000000	StockLot Time:	0.000	000000	W7 Steel:	0.1480	W8 Steel:	0.1480	Spec. Gas Steel:	0.1480				
Batch Weight:	0.000	000000	StockLot Weight:	0.000	000000	W9 Steel:	0.1480	W10 Steel:	0.1480	Spec. Gas Steel:	0.1480				
Batch Length:	0.000	000000	StockLot Length:	0.000	000000	W11 Steel:	0.1480	W12 Steel:	0.1480	Spec. Gas Steel:	0.1480				
Alloys Additions			Mixing Data			Temperature Measurements									
Code:	000000	000000	Batch:	000000	000000	Max. Temp.:	1700	Temp.:	1700	Temp.:	1700				
Code:	000000	000000	Batch:	000000	000000	Temp.:	1700	Temp.:	1700	Temp.:	1700				
Code:	000000	000000	Batch:	000000	000000	Temp.:	1700	Temp.:	1700	Temp.:	1700				
Code:	000000	000000	Batch:	000000	000000	Temp.:	1700	Temp.:	1700	Temp.:	1700				
Alloys and Additions per Batch						Alloys and Additions per Batch									
S#	[th.mt.ss]	Energy[kWh]	Material	Quantity [kg]		S#	[th.mt.ss]	Energy[kWh]	Material	Quantity [kg]					
0	0.000000	0.000000	0.000000	0.000000		0	0.000000	0.000000	0.000000	0.000000					
0	0.000000	0.000000	0.000000	0.000000		0	0.000000	0.000000	0.000000	0.000000					
0	0.000000	0.000000	0.000000	0.000000		0	0.000000	0.000000	0.000000	0.000000					
0	0.000000	0.000000	0.000000	0.000000		0	0.000000	0.000000	0.000000	0.000000					
0	0.000000	0.000000	0.000000	0.000000		0	0.000000	0.000000	0.000000	0.000000					
0	0.000000	0.000000	0.000000	0.000000		0	0.000000	0.000000	0.000000	0.000000					
0	0.000000	0.000000	0.000000	0.000000		0	0.000000	0.000000	0.000000	0.000000					
0	0.000000	0.000000	0.000000	0.000000		0	0.000000	0.000000	0.000000	0.000000					
Slag Analysis															
Time	Sample	SiO2	Al2O3	CaO	MnO	MgO	CuFe	TPa	S	P2O5	TiO2	CaO/SiO2	CaO/SiO2	CaO/SiO2	CaO/SiO2
Time	Sample	SiO2	Al2O3	CaO	MnO	MgO	CuFe	TPa	S	P2O5	TiO2	CaO/SiO2	CaO/SiO2	CaO/SiO2	CaO/SiO2
0.0000	0.0000	0.0000	0.0000	0.0000	0.0000	0.0000	0.0000	0.0000	0.0000	0.0000	0.0000	0.0000	0.0000	0.0000	0.0000
0.0000	0.0000	0.0000	0.0000	0.0000	0.0000	0.0000	0.0000	0.0000	0.0000	0.0000	0.0000	0.0000	0.0000	0.0000	0.0000
0.0000	0.0000	0.0000	0.0000	0.0000	0.0000	0.0000	0.0000	0.0000	0.0000	0.0000	0.0000	0.0000	0.0000	0.0000	0.0000

Interested?
Be in touch with our Digital transformation experts
kkannan@aicnet.in
ragnunath@aicnet.in



Value Addition in every step of the production chain

MINIMIZE
LOSSES



MAXIMISE
YIELD



MAXIMISE
PRODUCTIVITY



IMPROVED
PROFITABILITY

From : '01/08/2021 17:26:52' To : '04/08/2021 00:00:00'

Income / consumption of ferroalloys in the incoming / outgoing bunker No.:

Bin Feedings	Start time [hh:mm:ss]	Finish Time [hh:mm:ss]	one	Initial Weight[Kg]	Final Weight[Kg]	Incoming Weight[Kg]	Consumption	sys	Drift	Accumulated Drift
01-08-2021	17:47:38	17:47:38	1	300	12382.36	12082.36	204		0	0
02-08-2021	00:07:10	00:07:10	1	300	13921.66	13621.66	299		0	0
	01:49:44	01:49:44	1	13921.66	3699.652	3626.01	73		0	0
	01:58:38	01:58:38	1	3699.652	3969.652	452	200		0	0
	07:12:58	07:12:58	1	3969.652	12261.25	10311.586	700		0	0
	07:44:14	07:44:14	1	12261.25	13292.94	3812.689	700		0	0
	08:05:14	08:05:14	1	13292.94	12969.91	276.9478	700		0	0
	09:41:07	09:41:07	1	12969.91	13679.91	1409.019	700		0	0
	12:01:27	12:01:27	1	300	2858.794	2048.794	762		0	0
	12:43:26	12:43:26	1	2858.794	2612.249	455.4722	700		0	0
	13:29:58	13:29:58	1	2612.249	3225	1039.73	762		0	0
	16:18:44	16:18:44	1	3225	11623.26	179.2444	800		0	0
	17:05:28	17:05:28	1	11623.26	13337.26	516.1191	804		0	0
	18:04:09	18:04:09	1	13337.26	10556.71	21.3295	800		0	0
	18:05:44	18:05:44	1	10556.71	10575.41	822.2877	800		0	0
	19:23:29	19:23:29	1	10575.41	12736.9	2857.093	300		0	0
	19:25:38	19:25:38	1	12736.9	12734.95	206.0527	283		0	0
	20:36:35	20:36:35	1	300	13287.34	13284.04	300		0	0

Interested?

Be in touch with our Digital transformation experts

kkannan@aicnet.in
raghunath@aicnet.in

